



OWNER'S MANUAL
FOR THE
TUCKER BOX



**GROUND DRIVEN
STOCKFEEDER**

C-Dax Systems Ltd
PO Box 1010, 145 Harts Road
Tiritea, Palmerston North
Ph: +64 6 354 6060
Fax: +64 6 355 3199
E-Mail: sales@c-dax.co.nz
Website: www.c-dax.com

SAFETY PRECAUTIONS

TUCKER BOX

AN IMPORTANT MESSAGE FOR OWNERS & OPERATORS OF C-DAX ATTACHMENTS/ACCESSORIES

Be warned of the dangers of loading your ATV or other vehicle in excess of its carrying capacity. It is important to understand that any loads or attachments whether fastened to or placed on a vehicle or ATV will alter the stability or handling characteristics of that vehicle or ATV. Spray tanks or other equipment must be filled only to a level where the gross weight is within the load limit of the ATV or other vehicle.

Safety is a primary concern in the design, manufacture, sale, and use of spray tanks and other equipment. As manufacturers of spray tanks and other equipment we want to confirm to you, our customers, our concern for safety. We take this opportunity to remind you about the simple, basic and common sense rules of safety when using spray tanks and other equipment. Failure to follow these rules can result in severe injury or death to operators and bystanders.

It is essential that everyone involved in the assembly, operation, transport, maintenance and storage of this equipment be aware, concerned, prudent and properly trained in safety.

This also applies to equipment that is loaned or rented to someone who has not read the owner's manual and is not familiar with the operation of application equipment.

- NEVER EXCEED THE LOAD LIMIT CAPACITY OF THE ATV OR OTHER VEHICLE.
- PLEASE NOTE THAT FILLING THE SPRAY TANK OR OTHER EQUIPMENT COMPLETELY AND OR THE ATTACHMENT OF ADDITIONAL EQUIPMENT TO THE ATV MAY EXCEED THE ATV'S MAXIMUM LOAD CAPACITY, AND ADVERSELY AFFECT THE STABILITY OF THE ATV OR OTHER VEHICLE.
- CARGO SHOULD BE PROPERLY DISTRIBUTED AND SECURELY ATTACHED.
- REDUCE SPEED WHEN CARRYING CARGO OR PULLING A TRAILER OR TRAILED APPLICATION EQUIPMENT AND ALLOW GREATER DISTANCE FOR BRAKING.
- NEVER ALLOW ANYONE TO RIDE ON YOUR SPRAYER OR OTHER EQUIPMENT.
- ALWAYS FOLLOW THE INSTRUCTIONS IN THE OWNER'S VEHICLE MANUAL FOR CARRYING CARGO OR PULLING A TRAILER.
- PROPER MAINTENANCE IN LINE WITH MANUFACTURER'S RECOMMENDED MAINTENANCE PROCEDURES IS ESSENTIAL.
- BEFORE APPLYING CHEMICALS, READ THE LABEL OF THE CHEMICAL MANUFACTURER OR SUPPLIER FOR PERSONAL PROTECTIVE EQUIPMENT AND OPERATE AS RECOMMENDED.
- THE SAFETY OF ALL CHEMICALS USED IN AGRICULTURE IS UNDER THE JURISDICTION OF A GOVERNMENT AGENCY, IE N.Z. MINISTRY FOR THE ENVIRONMENT; USA ENVIRONMENTAL PROTECTION AGENCY. FURTHER LOCAL GOVERNMENT OR STATE LAWS MAY APPLY.

SAFETY PRECAUTIONS

Do not overload your feeder. The maximum permissible payload is 250 Kg.

Never use dirty product or product with stones or lumps.

Ensure that your towing vehicle is adequate for the task. The maximum tare weight is 350 Kg.

If using the feeder over hilly terrain the payload should be reduced to ensure that the feeder stability is not compromised.

Never allow anyone to ride on the feeder.

Keep the feeder in good condition. Cleanliness and maintenance are essential for safe and trouble free operation.

Never leave product in the hopper or store the feeder without cleaning it.

TUCKER BOX

OWNER'S MANUAL

(Pt.No.90030 Issue 6 Dated 29 July 2003)

TABLE OF CONTENTS

2	Safety Precautions
4	Introduction
5	Warranty
6	Description
	Specifications
7	Operation
8	Calibration
10	Operating The Feeder
	Fitting the Rain Cover
11	Maintenance
	Before Use
	After Each Use
12	Replacement Parts

INTRODUCTION

Congratulations. You have just purchased an advanced stock feeder from C-DAX Systems. C-DAX Systems is committed to providing you, the farmer, with quality applying systems.

WARRANTY

C-DAX Systems LTD warrants to the original purchaser that the equipment is sold free from defects in materials and workmanship for a period of 12 months from date of retail sale (6 Months from date of retail sale for all equipment sold in the U.K.).

Accordingly, C-DAX Systems undertakes to repair the equipment, or at our option replace, without cost to the original purchaser either for materials, parts or labour, any part which within the specified warranty period from time of delivery is found to be defective. PROVIDED that the equipment has been used for normal purposes in accordance with the instructions, and has not been subject to neglect, misuse or accident, and has not been repaired, serviced or dismantled by any person other than a service agent or person authorised by C-DAX Systems.

The warranty does not extend to cover: consequential damage; repair or replacement of parts due to fair wear and tear; or damage resulting from neglect, misuse, accident or hireage. SPECIFICALLY the warranty excludes battery damage, damage arising from chemical attack, and units built to customers specifications.

All goods returned to C-DAX Systems are freight paid by the **sender** and if subject to a warranty claim, **must** be accompanied by a completed warranty claim form. Warranty claim forms are available from C-DAX dealers.

LIABILITY

The maximum liability, which is accepted by C-DAX Systems, is limited to replacement of faulty goods only. Every care has been taken in the manufacture of our goods but because use of the goods is outside the control of the manufacturer, the end user assumes all responsibility for the use. Neither the manufacturer nor retailer shall be liable for loss or damage resulting from use.

Any advice or recommendations given by C-DAX Systems, its agents, or employees is given in good faith and based on the best information available to us. No liability or responsibility is accepted or implied as a result of any information or advice tendered by C-DAX Systems, its agents or employees. The end user accepts all responsibility arising from that advice.

DESCRIPTION

The C-DAX Tucker Box is a ground-driven stock feeder designed for application of pelleted stock feed and grain. The uniquely designed 300 litre translucent non-corrosive polyethylene hopper is specially profiled for good product flow and ease of filling. The convenient flexible polypropylene cover is easy to remove, install and store if not required. An adjustable steel shutter allows control the flow of product to the delivery drum. The lightweight yet robust powder coated frame is fitted with chunky turf tyres as standard equipment. The drive axle uses high-quality double-sealed self-aligning bearings. The drum axle uses high-quality low maintenance composite bearings. The dual control levers allow instant setting of product feed rate and product control.

Specifications

(Specifications subject to change without notice)

Dry Weight	85 Kg
Dimensions	W1300mm, H1200mm, L1800mm
Capacity	300 litre (250Kg)
Drive	Ground driven (single wheel)
Wheels	18 x 760 Chunky turf tyres with inner tubes
Tyre pressure	12 PSI
Track	1100mm between wheel centres
Clutch	Removable Pin
Control	Adjustable steel slide with index handle
Hopper	Non-corrosive polyethylene, ergonomically designed for ease of filling and inspection.
Hopper cover	Lightweight polypropylene fabric
Frame	Powder coated steel
Axle Bearings	Sealed ball races
Drum Shaft Bearings	Plain Composite
Application Rate	1Kg per snack @ 2M centres @ 8kph (Stock Feed Pellets)
Snack Size	450mm x 350mm typical
Towing speed	5-10 Kph (Operation) 20 Kph (Transit)

Order Information	Standard unit;	NZ P/N 80546	AUST 80499	UK 82082
Option	Digital Speedometer;	Part No. 32301		
Option	Extended Shutter Control Lever;	Part No. 81045		
Option	50mm Tow Hitch Kit	Part No. 43803		
Option	Wheels with Knobbly Tyres	LH	Part No. 44825	
		RH	Part No. 44808	

OPERATION

The product to be dispensed is placed in the hopper. When the feeder is towed forward the left hand wheel drives through a chain reduction drive to turn the dispensing drum forward. When the shutter handle is pulled forward, the shutter at the bottom of the hopper opens allowing product to flow from the hopper. The size of the opening is set by a shutter stop lever, which locates into one of nine pre-set positions.

As the dispensing drum rotates past the shutter opening, product flows from the hopper into the dispensing boxes in the drum. As each box rotates past an opening at the bottom of the drum shroud, product is dropped to the ground. The weight of the snacks is dependant on the product, shutter opening, and towing speed. The snack interval is always 2M between centres. The size of the snack will be 400-600mm long by 350mm wide depending on product characteristics and speed.

The drum may be disengaged from the drum drive shaft by removing a pin from the shaft. The drum may then be moved to an outer position and locked to the frame. In this position product will flow from the shutter opening past the drum and fall from the drum shroud in a line on the ground.

A fabric hopper cover with an elastic band sewn into the outer edge to grip the lip of the hopper can be fitted to prevent rain and debris from entering the hopper.

CALIBRATION

Differences in the characteristics such as; pellet size, pellet shape, and moisture content can affect the calibration of the stock feeder. For accurate application of stock feeds the feeder should be calibrated regularly. The calibration guides below will assist with calibration of the feeder but should be regarded as a guide only.

Calibration should be carried out over a concrete or sealed surface so that the stock feed can be collected and weighed.

Shut the Shutter Control Handle to the closed position.

To calibrate your feeder, pour a bag of stock feed into the hopper.

Set the Shutter Stop Lever to the position (1-9) indicated in the Calibration Guides below.

Ensure the drive pin is correctly inserted into the hole in the drum axle.

Tow the feeder at the desired speed and pull the Shutter Control Handle forward.

Dispense three or four snacks then close the shutter handle.

Ignore the first and last snacks as these may be incomplete. Collect a snack and weigh it using a suitable set of scales.

Adjust the shutter stop or towing speed to alter the snack size.

Calibration Guide (Kg per Snack)

Stock Feed Pellets

Shutter Position	5 Kph	8 Kph	10Kph
2	0	0	0
3	0	0	0
4	0.3	0.3	0.3
5	0.6	0.5	0.4
6	0.9	0.7	0.6
7	1.3	1.0	0.8
8	1.7	1.1	1.0
9	1.8	1.3	1.1

Pasture Plus Pellets

Shutter Position	5 Kph	8 Kph	10Kph
2	0	0	0
3	0.4	0.3	0.3
4	0.6	0.5	0.4
5	1.0	0.8	0.6
6	1.3	0.9	0.8
7	1.6	1.1	1.0
8	1.9	1.3	1.2
9	2.0	1.5	1.3

Maize

Shutter Position	5 Kph	8 Kph	10Kph
2	0	0	0
3	0.3	0.2	0.2
4	0.8	0.6	0.5
5	1.6	1.0	0.8
6	2.4	1.6	1.2
7	2.8	2.0	1.6
8	3.0	2.5	1.9
9	3.0	2.5	2.0

Barley

Shutter Position	5 Kph	8 Kph	10Kph
2	0	0	0
3	0.4	0.3	0.3
4	1.0	0.8	0.6
5	1.8	1.0	0.9
6	2.4	1.5	1.3
7	2.6	2.0	1.5
8	2.8	2.2	1.8
9	2.8	2.4	2.0

OPERATING THE FEEDER

When the feeder has been correctly calibrated the hopper may be filled to the required level and feeding commenced.

CAUTION

To prevent damage to the feeder do not tow at speeds in excess of 20 Kph.

To prevent inadvertent operation of the shutter while the feeder is in transit it is recommended that the Shutter Stop Lever be moved to Position 1 to lock the shutter closed.

To prevent the shutter from vibrating closed when the feeder is operated over rough ground, the Shutter Control Handle friction may be increased by tightening the adjustment nut at the bottom of the Handle.

CAUTION

When operating feeders fitted with the optional extended Shutter Control Handle, care should be taken to ensure that the handle does not interfere with the ATV carrier frame, especially when operating at high application rates over uneven ground.

Fitting the Rain Cover.

To fit the rain cover to the hopper, loop one corner of the cover over a corner of the hopper then stretch the cover over the opposite corner of the hopper so that the elastic edge holds it in place. Then stretch the third corner over the hopper rim followed by the last corner. Ensure that the cover is properly stretched over the hopper rim before moving off.

MAINTENANCE

The following maintenance actions are mandatory for reliable use of the feeder.

Before Use

Check the tyre pressures and charge with air as required. The correct pressure is 12 PSI. (80 Kpa)

Check the hopper to ensure that no debris is inside.

After Each Use or Daily When in Use

Remove all traces of product from the feeder by brushing or washing. Pay particular attention to areas where product has accumulated and built up. Remove by scraping if necessary taking care not to damage the surface finish of the feeder or its components.

If washing do not direct high-pressure water onto wheel bearing seals.

After cleaning lubricate the machine as follows;

Apply general-purpose grease to the wheel bearings (RHS only).

Apply general-purpose grease to the tow hitch swivel (UK model only)

Apply oil (SAE30) to the drum shaft each side of the bearings where the shaft is fixed to the frame. The oil will work into the bearing when the shaft revolves.

Slide the drum to the outer position and apply oil (SAE30) to the shaft inside the drum shroud and through the drive pinhole.

Slide the drum back into the snack position and lock in place with the drive pin.

Apply oil (SAE30) to the drive chain through the hole in the top of the chain cover.

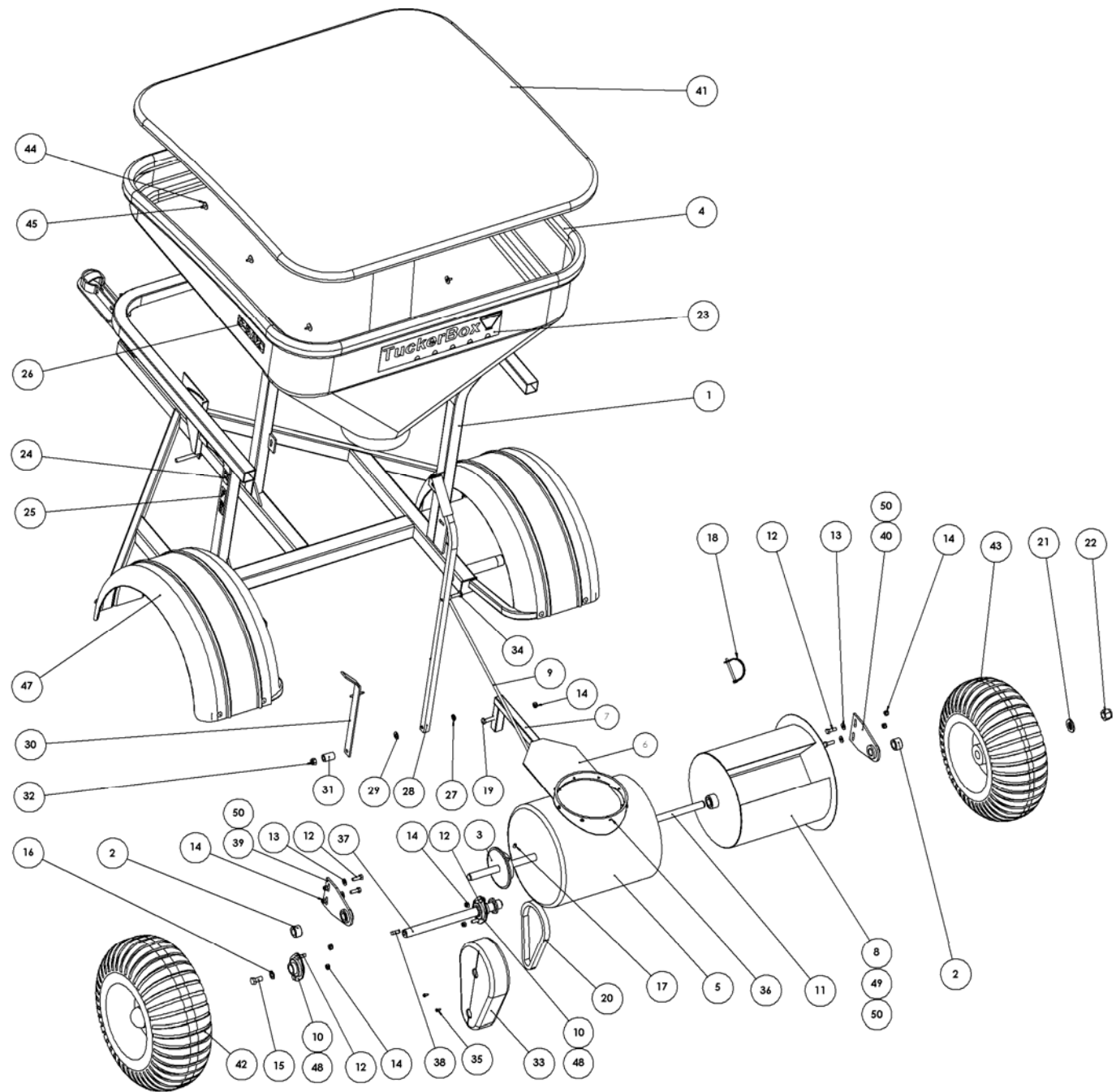
Apply water-displacing fluid such as WD 40 or LPS3 to all exposed metal parts.

Check for damaged or worn components and replace as required.

REPLACEMENT PARTS LIST

When ordering replacement parts always quote the feeder Serial Number and the Part Number of the required part.

Part No.	Description	Qty Required
43803	Tow Hitch Handle, 50mm (UK and AUS Model)	1
43805	Tow Hitch Handle, 1 7/8" (NZ Model)	1



ITEM	QTY. DESCRIPTION	PART No.
1	1 Frame ASY-TuckBox-PC	82083
2	2 Shaft Collar-20ID-ZP	82148
3	1 Sprocket-30TTH-1/2"-DLD	82121
4	1 Hopper-TuckBox-MDPE	82118
5	1 HSG-Drum TuckerBox-MDPE	82117
6	1 Shutter TuckerBox-ZP	82126
7	1 Rail-Tbox-ZP	82128
8	1 Drum-TBox-PC	82145
9	1 Arm-Shutter-TuckBox-ZP	82147
10	2 Bearing-CDIT300GD	81019
11	1 Shaft-Drum-Tbox-ZP	82133
12	8 Screw-HH-M8x25-ZP	42518
13	4 Washer-Flat--M8-ZP	42555
14	9 Nut-Nyloc-M8-ZP	42552
15	1 Screw-HH-M12x25-ZP	42747
16	1 Washer-Flat-M12x32x3--GL	42746
17	1 Screw-Grub-M8x10-BK	42026
18	1 Pin-Lock-6x38-PLD	42761
19	1 Screw-HH-M8x40-ZP	42519
20	1 Chain-TBox-Link	82123
21	1 Washer-Flat-for 44803-BK	
22	1 Nut-Nyloc-for 44803-ZP	
23	1 Label-TuckerBox	66099
24	1 Label-CE-XX-40X20-VY	66078
25	1 Label-Serial No. Metal	65501

ITEM	QTY.	DESCRIPTION	PART No.
26	2	Label-C-DAX 30x140-Meyer	66095
27	1	Washer-Ex-S/Proof-10-ZP	24026
28	1	Lever-Shutter-Tbox-ZP	82156
29	1	Washer-Flat-M10-ZP	42556
30	1	Arm INDR-CDIT300GD-ZP	71190
31	1	Spring-COMP-Crinkle Plate	46523
32	1	Nut-Nyloc-M10-ZP	42565
33	1	Guard-Chain-Tbox-MDPE Blue	82119
34	2	Cap-Starlock-8mm-CP	42748
35	2	Screw-PH-POZIx1/2"x10G-ZP	42047
36	8	Screw-PH-POZIx5/8"x10G-ZP	42048
37	1	Axle-Drive ASY Tuck-Box	82143
38	1	Key-8x8-CDIT300GD	81007
39	1	BKT-Drum Axle-LH-TBox-ZP	82158
40	1	BKT-Drum Axle-TBox-ZP	82124
41	1	Cover-CDIT300GD	81008
42	1	Wheel ASY-Key TBLS Turf	44841
43	1	Wheel ASY-BRG TBLS Turf	44842
44	9	Washer-Flat-3/16x7/8-SS	40204
45	9	Rivet-5x5/8"-SS	42802
46	1	Washer-Flat-44x25.5x3-BK	40202
47	1	Mudguard-Blue-MDPE	51509
48	2	Flange-Bearing-TBox	82120
49	1	Bearing-20IDx23ODx20LG-Straight	82146
50	3	Bearing-20IDx23ODx21LG-Flanged	82138